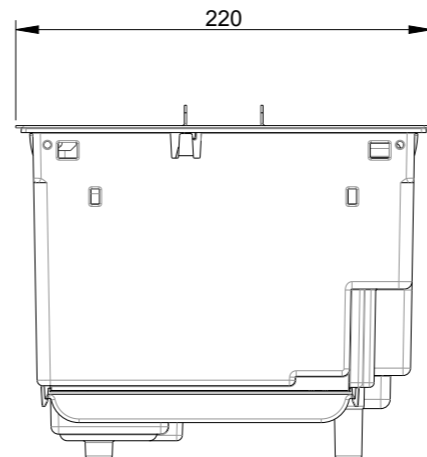
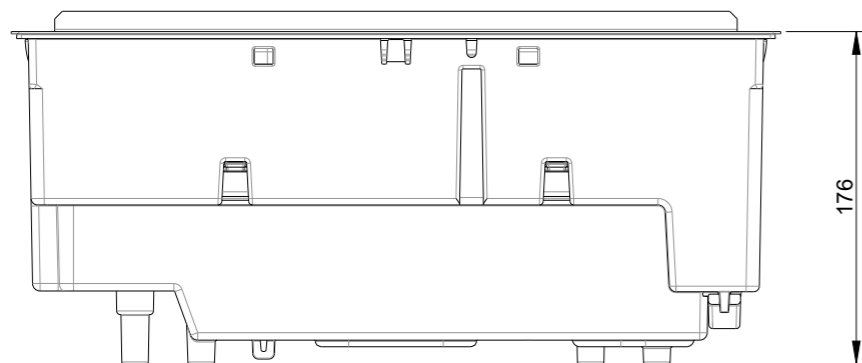
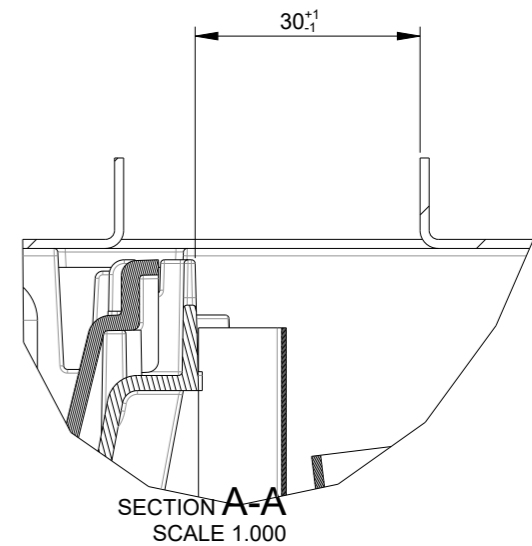


- NOTES:
1. ALL LETTERS + SYMBOLS TO BE CLEARLY LEGIBLE WITH CRISP EDGES AND AT A MINIMUM DEPTH OF 0.2mm
 2. ENSURE THE METAL FUELBED LID IS EASY TO FIT AND EASY TO REMOVE
 3. WITH THE METAL FUELBED LID CENTERED ON THE BASE BODY, THE GAP BETWEEN THE METAL FUELBED AND THE PLASTIC NOZZLE TO BE MAXIMUM 3.5mm



ISSUE	MODIFICATIONS	OCN	APPD	DATE	NOTES
1	Production Release	----	AR	09/02/23	
2	Fuelbed replaced with metal bed	-----	AR	15/02/2023	
3	7W decal, 7 button controls cover & 7W switch board replaced with 2W decal, 2 button controls cover & 2W switch board	12032	AR	02/10/23	
4	300003098 printed RC number updated.	-----	AR	09/02/24	
5	DRAWING UPDATED FOR FUERJ PRODUCTION	-----	HC	24-10-24	

GLEN DIMPLEX RESEARCH & DEVELOPMENT

Dunleer, Co.Louth, Ireland. Tel: +353(0)41 6872200. Fax: +353(0)41 6851464.

DRAWN BY	DATE	SCALE	HOLE TOL	GEN TOL
AR	09/02/2023	0.083	+/-0.05	0 +/-0,4
APP'D BY	DATE	DIM IN	ANGLES	0,0 +/-0,2
		mm	+/-0.5°	0,00+/-0,1

THIS DRAWING IS SUPPLIED IN CONFIDENCE AND THE COPYRIGHT THEREOF IS THE PROPERTY OF GLEN DIMPLEX : IT MUST NOT BE USED BY A THIRD PARTY WITHOUT PRIOR PERMISSION. © 2023

PROJECT **CAS400LED EU**

TITLE **PRODUCT ASSEMBLY**

NO. OFF:

DO NOT SCALE
IF IN DOUBT ASK

THIRD ANGLE PROJECTION

MATERIAL -----
FINISH -----

R.o.H.S. compliant
All materials must comply with the requirements of European Directive 2011/65/EU on the restriction of the use of certain hazardous substances

DRG NO **X-210791**

A3
Sht 1
of 2

