

## Cassette 500 (projects)

230V/50Hz | 220 Watt

Experience Better Living



Cassettes



Picture the perfect fireplace. But forget about venting and heat, because flames are made of pure water vapour and LED light. Flames you can reach out and touch. The revolutionary Optimyst® Cassette models redefine the electric fireplace and enable you to add a dramatic fire feature to any space, with stunning realism. This Projects version even lacks the need of a periodic water refill, thanks to its permanent water connection. Ready to be combined and linked with a Cassette 1000 Projects.

- Suitable for installation projects and designed to fit into a custom-made frame or fireplace
- Connects to a main water supply, no manual refill needed
- Quick-fit IEC (kettle) connection for an individual fireplace of any length
- Crackling logs sound effects with adjustable volume
- Logset available as an accessory



All-round view



Surprising by the floating flame and smoke effect and variable flame intensity



Optimyst flame technology, flame patterns by cold water vapour



Flames and lamps use energy-efficient LEDs that require no maintenance and can burn separately



Product is delivered without decoration, but can be decorated with a wood set (optional to be ordered)



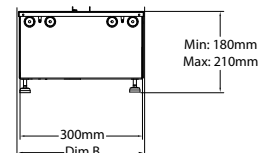
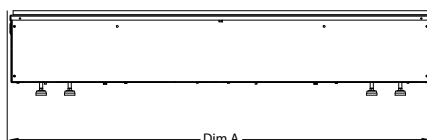
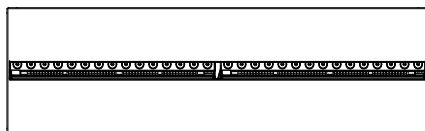
Very suitable for installation

# Cassette 500 (projects)

230V/50Hz | 220 Watt

Experience Better Living

## Unit Dimensions



### DIMENSIONS

|                          | Width (cm) | Height (cm) | Depth (cm) |
|--------------------------|------------|-------------|------------|
| Cassette 500 (projects)  | 51         | 23          | 30         |
| Cassette 1000 (projects) | 101        | 23          | 30         |

## Specifications

|  |               |
|--|---------------|
| Flame Effect system                        | Optimyst®     |
| Model number                               | 211439        |
| GTIN/UPC                                   | 5011139211439 |
| Model                                      | Cassette      |
| View Type                                  | Four-sided    |
| Colour - Furniture                         | Black         |
| Media Bed                                  | Metal Plate   |
| Viewing window WxH (cm)                    | 49x20         |
| Build in dim (WxHxD) (cm)                  | 51x22,5x30,4  |
| Heating function                           | No            |
| Heating Element                            | No            |
| Remote Control                             | Yes           |
| Manual Operation on the fireplace possible | Yes           |
| Lighting Module                            | LED           |
| Sound                                      | Yes           |
| Media Bed Flame Colours                    | No            |
| Heat Setting 1 in Watts                    | -             |
| Heat Setting 2 in Watts                    | -             |
| Power consumption (flame effect) (Watt)    | 220           |
| Wattage                                    | 220           |
| Voltage                                    | 230V/50Hz     |
| Unpacked Weight (kg)                       | 11            |
| Plug Length                                | 1,5 m         |
| Warranty                                   | 2 years       |



All cassettes must have adequate ventilation for an optimal fire experience. For advice, read the manuals or visit the website [www.dimplexfires.com](http://www.dimplexfires.com)